

# Nordmandiet

## 4. del

Jersey





Great Food & Drink - Family Fun  
at Fabulous Day at the Races

THE PIRATES

horse racing  
Great Food & Drink - Family Fun  
at Fabulous Day at the Races  
at St. Owen - Tel: 01704 - www.peterborough.co.uk

27th  
MAY  
2.30

A DIFFERENT  
EXPERIENCE  
EVERY DAY

PIRATES  
MARITIME MUSEUM  
WEDNESDAY 22 MAY TO  
SUNDAY 2 JUNE 11  
9AM TO 4PM

















Coaches only  
P Every day 8 am - 6 pm  
←  
Disc Zone  
P Every day 8 am - 10 pm  
Peak days 2 hours  
→







PARKS AND GARDENS  
WELCOME TO  
GOREY GARDENS  
A FACILITY PROVIDED BY States of Jersey

No fouling  
In the interest of health & hygiene please do not allow your dogs to foul the gardens











Fresh Lobster  
& Crab Meals

Ice Cream - Doughnuts  
Drinks & Snacks

**The Breakwater Cafe**

St. Catherine - Tel 851141

Delicious Daily Specials - Jersey Cream Teas













WILL DOG OWNERS PLEASE  
ENSURE THAT IF THEIR DOGS  
FOUL THE FOOTPATHS, THE  
FAECES ARE REMOVED AND  
PLACED IN THE RECEPTACLE  
PROVIDED. THANK YOU FOR YOUR  
CO-OPERATION.

By Order of  
Constable





Tantivy  
Blue Coach Tours



STATIONER  
1. [icon] [unreadable]  
2. [icon] [unreadable]  
3. [icon] [unreadable]  
4. [icon] [unreadable]  
5. [icon] [unreadable]  
6. [icon] [unreadable]  
7. [icon] [unreadable]  
8. [icon] [unreadable]  
9. [icon] [unreadable]  
10. [icon] [unreadable]  
11. [icon] [unreadable]  
12. [icon] [unreadable]  
13. [icon] [unreadable]  
14. [icon] [unreadable]  
15. [icon] [unreadable]  
16. [icon] [unreadable]  
17. [icon] [unreadable]  
18. [icon] [unreadable]  
19. [icon] [unreadable]  
20. [icon] [unreadable]





GUERNSEY • SARK • ALDERNEY • FRANCE

GUERNSEY • SARK • ALDERNEY • FRANCE



















Don't miss the opportunity of seeing  
**CHANNEL ISLANDS  
MILITARY MUSEUM**  
One of the most comprehensive collections  
of authentic German & British Occupation  
memorabilia in England.  
UNIFORMS - PHOTOGRAPHS  
DOCUMENTS - WEAPONS ETC.  
Admission charge for Adults £4.00 Children £2.00

**ADULTS £4.00**  
**CHILDREN £2.00**  
UNDER 5s FREE ADMISSION

Don't miss the opportunity of seeing  
**CHANNEL ISLANDS  
MILITARY MUSEUM**  
One of the most comprehensive collections  
of authentic German & Civilian Occupation  
memorabilia on display.  
**UNIFORMS • PHOTOGRAPHS  
DOCUMENTS • WEAPONS ETC.**  
Admission charge for Adults \$1.00 Children \$2.00

The Channel Islands  
Military Museum





















During the morning of Monday April 17th 1995 whilst on passage from Jersey to Sark, the French catamaran "Saint-Malo" struck a rock known as Le Frouquic, 900 metres north of La Corbiere Lighthouse. Visibility was good at the time, but with a Spring tide ebbing to the west and a westerly Force 5 wind, the sea conditions near Corbiere were moderate to rough.

Emergency services responded promptly and nearby ships gave assistance. All 307 passengers and crew were saved from the partially submerged vessel.

This memorial is erected in thanksgiving and as a tribute to the rescue, which with the help of God and of many strong arms, ensured the safe return of all on board.





















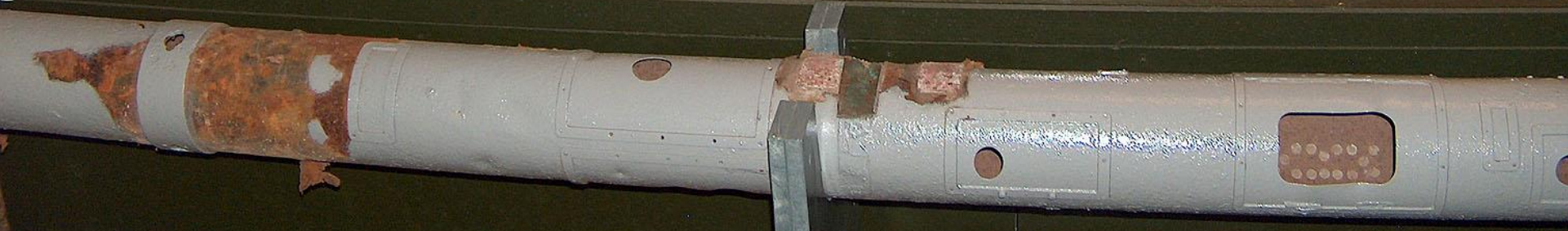
anmachungen

Radio-Verfahren  
für die Luftwaffe

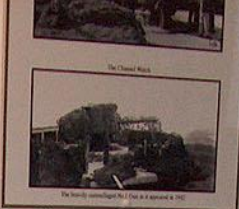
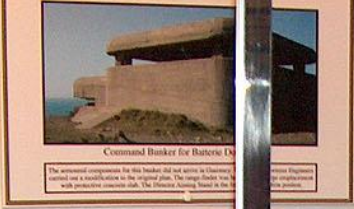




Summer 1943. The armored derrick and crane for the large concrete  
Large quantities of steel reinforcing bars (rebar) were in the background.







**Battery Lubington**  
Battery Command Bunker  
No. 1 Gun position  
Naval Structure and Range-Finding Position  
No. 1 Gun Position  
1941  
United States Coast and Geodetic Survey

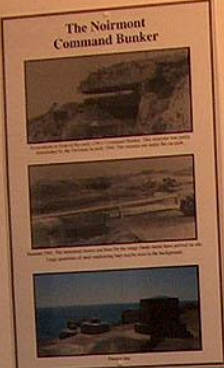




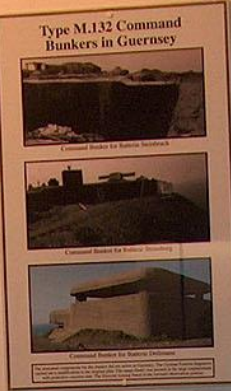




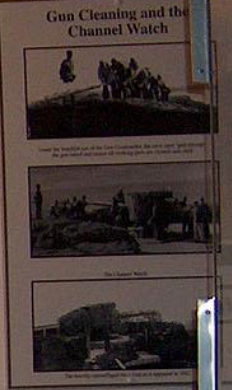
en and Range-Finding Position 1 appeared in May, 1942



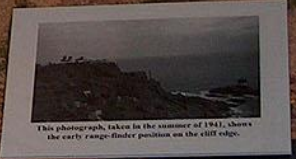
The Noirmont Command Bunker



Type M.132 Command Bunkers in Guernsey



Gun Cleaning and the Channel Watch



This photograph, taken in the summer of 1941, shows the early range-finder position on the cliff edge.

**Batterie Lothringen**  
 Batterie 1 Command Bunker  
 No. 1 Gun position  
 and  
 Naval Direction and Range-Finding Position 1  
 National Park  
 Jersey  
 Back for the Channel Islands Heritage Centre in Jersey







THIS HEADLAND WAS ACQUIRED BY THE  
STATES OF JERSEY ON BEHALF OF THE  
PUBLIC IN COMMEMORATION OF THOSE  
MEN AND WOMEN OF JERSEY WHO  
PERISHED IN THE SECOND WORLD WAR  
1939 — 1945





AT THIS PLACE ON 9<sup>TH</sup> MAY 1945, ADVANCED PARTIES FROM THE ROYAL NAVY AND THE BRITISH ARMY LIBERATED JERSEY FROM NEARLY FIVE YEARS OF OCCUPATION BY THE GERMAN FORCES. THEY AND THE RETURN OF THE BRITISH FLAG WERE GREETED BY THOUSANDS OF ISLANDERS WITH RELIEF, JOY AND GRATITUDE.

ON THE 50<sup>TH</sup> ANNIVERSARY OF THAT DAY, THE STATES AND PEOPLE OF JERSEY DEDICATE THIS LIBERATION SQUARE TO COMMEMORATE THAT HISTORIC EVENT AND ALL THOSE WHOSE EFFORTS AND SACRIFICES MADE THIS POSSIBLE.

THE SCULPTURE BY PHILIP JACKSON FRBS WAS COMMISSIONED BY THE JERSEY PUBLIC SCULPTURE TRUST AND UNVEILED BY HIS ROYAL HIGHNESS THE PRINCE OF WALES ON 9<sup>TH</sup> MAY 1995.

THE DESIGN OF THE SQUARE INCLUDES A SIGNIFICANT DEGREE OF SYMBOLISM WHICH CAN BE EXPLAINED AS FOLLOWS-

EACH CIRCLE HAS A FUNCTION RELATING TO THE SCULPTURE; THE FOUNTAIN; THE COMPASS; THE FLAGPOLES AND THE TIME CAPSULE.

THE CIRCULAR AND CURVELINEAR FORMS REPRESENT FREE THOUGHT AND LIBERATION.

THE PLINTH OF THE SCULPTURE REPRESENTS THE ISLAND; THE SCULPTURE REPRESENTS THE PEOPLE; THE MOAT REPRESENTS THE SEA AND THE TWELVE FOUNTAINS REPRESENT THE PARISHES OF THE ISLAND.

THE COMPASS ROSE SIGNIFIES THAT JERSEY IS PART OF A LARGER GLOBAL COMMUNITY. WHILST REJOICING IN ITS OWN LIBERATION IN 1945 AND PEACE DURING THE SUBSEQUENT 50 YEARS, JERSEY LOOKS OUTWARD IN THE HOPE THAT THE PEACE AND FREEDOM WHICH IT ENJOYS WILL ONE DAY EXTEND THROUGHOUT THE WORLD.





1899

SOUTHAMPTON HOTEL

ASK FOR *Mary Ann*

YACHT HOTEL





PASTY PRESTO

LIBERTY WHARF

Open

PASTY PRESTO

Seafood Van

4